



## AE-F(S) 2.0-2H2

**IP65** waterproof with  
USB-A and  
Type C



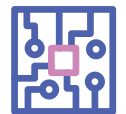
**10-years** warranty 6000  
cycle to 70% capacity



Supports UPS load, fast  
switching within **4ms**



Portable outdoor  
power applications



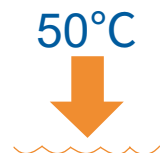
**All-in-one** design  
easy self-installation



Bluetooth, WiFi  
and mobile APP



Wide operating  
temperature **-10°C~50°C**





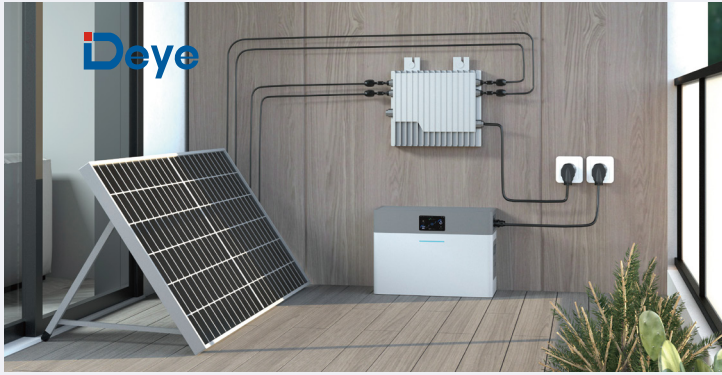
Low Voltage

# AE-FS2.0-2H2

1000W PV MPPT input  
800W bidirectional AC/DC  
2kWh LFP battery

Model	AE-FS2.0-2H2
<b>AC Technical Specification</b>	
Nominal Input/Output Power/UPS Power	800/800W
AC Input/Output Frequency and Voltage	50Hz(45Hz-55Hz), L/N(PE), 220/230 Vac
Grid Type	Single phase
Rated Grid input/output Current	3.5A
Max. Grid input/output Current	3.7A
Peak Power (off grid)	2 time of rated power, 10s
Power Factor Adjustment Range	0.8 leading to 0.8 lagging
Power Factor	1
DC injection current	THD<3% (Linear load<1.5%) mA
<b>DC Technical Specification</b>	
Max. PV Input Power	1,000W
Max. PV Input Current	15A
Max. PV Short-circuit Current	18A
Rated PV Input Voltage	35 (20 ~ 60)Vdc
Start Up DC Voltage	25Vdc
MPPT Voltage Range	20 ~ 60Vdc
Number of MPPT	2
Battery Chemistry	LiFePO <sub>4</sub>
Battery Nominal Voltage	51.2V
Battery Nominal Energy	2,000Wh
Battery Operating Voltage	43.2V ~ 57.6V
Battery Cycle Life	≥6,000 (@25°C±2°C, 0.5C/0.5C, 70%EOL)
<b>Other Technical Specification</b>	
Display	LCD & APP
Communication interfaces	Wifi, Bluetooth
Dimension (W × D × H)	450 × 210 × 321mm
Weight Appr.	24kg
Operating Temperature Range	-10°C ~ 50°C
Max. operating altitude	3,000m
Relative Humidity	15% ~ 85% (No Condensing)
Safety EMC/Standard	IEC62619, UN38.3, IEC/EN 62109-1, IEC/EN 62109-2, IEC/EN 61000-6-1, IEC/EN 61000-6-2, IEC/EN 61000-6-3, IEC/EN 61000-6-4
Grid Regulation	VDE4105, IEC61727/62116, VDE0126, AS4777.2, CEI 0 21, EN50549-1, G98, G99, C10-11, UNE217002, NBR16149/NBR16150
Battery Certification	UN38.3, IEC62619
Installation Style	Floor-Mounted
Warranty	10 years

Supports up to 4 AE-F2.0 Smart Extra Batteries up to 10kWh.



# Low Voltage AE-F2.0-2H2

800W bidirectional AC/DC  
2kWh LFP battery

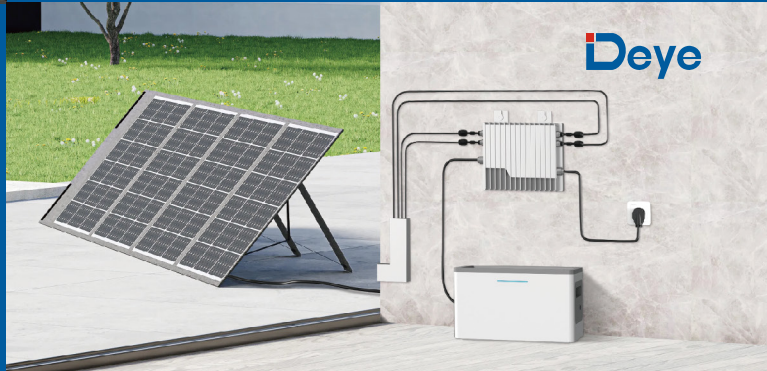
Model	AE-F2.0-2H2
<b>AC Technical Specification</b>	
Nominal Input/Output Power/UPS Power	800/800W
AC Input/Output Frequency and Voltage	50Hz(45Hz-55Hz), L/N(PE), 220/230 Vac
Grid Type	Single phase
Rated Grid input/output Current	3.5A
Max. Grid input/output Current	3.7A
Peak Power (off grid)	2 time of rated power, 10s
Power Factor Adjustment Range	0.8 leading to 0.8 lagging
Power Factor	1
DC injection current	THD<3% (Linear load<1.5%) mA
<b>DC Technical Specification</b>	
Max. PV Input Power	/
Max. PV Input Current	/
Max. PV Short-circuit Current	/
Rated PV Input Voltage	/
Start Up DC Voltage	/
MPPT Voltage Range	/
Number of MPPT	/
Battery Chemistry	LiFePO <sub>4</sub>
Battery Nominal Voltage	51.2V
Battery Nominal Energy	2,000Wh
Battery Operating Voltage	43.2V ~ 57.6V
Battery Cycle Life	≥6,000 (@25°C±2°C, 0.5C/0.5C, 70%EOL)
<b>Other Technical Specification</b>	
Display	LCD & APP
Communication interfaces	Wifi, Bluetooth
Dimension (W x D x H)	450 × 210 × 321mm
Weight Appr.	24kg
Operating Temperature Range	-10°C ~ 50°C
Max. operating altitude	3,000m
Relative Humidity	15% ~ 85% (No Condensing)
Safety EMC/Standard	IEC62619, UN38.3, IEC/EN 62109-1, IEC/EN 62109-2, IEC/EN 61000-6-1, IEC/EN 61000-6-2, IEC/EN 61000-6-3, IEC/EN 61000-6-4
Grid Regulation	VDE4105, IEC61727/62116, VDE0126, AS4777.2, CEI 0 21, EN50549-1, G98, G99, C10-11, UNE217002, NBR16149/NBR16150
Battery Certification	UN38.3, IEC62619
Installation Style	Floor-Mounted
Warranty	10 years

Supports up to 4 AE-F2.0 Smart Extra Batteries up to 10kWh.



# Low Voltage AE-F2.0 Expansion Battery Module

# Low Voltage AE-F2.0 Split machine application



Model	AE-F2.0
<b>Battery Technical Specification</b>	
Battery Chemistry	LiFePO <sub>4</sub>
Battery Nominal Voltage	51.2V
Battery Nominal Energy	2,000Wh
Max. Charging/Discharging Current	25A
Battery Operating Voltage	43.2V ~ 57.6V
Battery Cycle Life	≥6,000 (@25°C±2°C, 0.5C/0.5C, 70%EOL)
Parallel Capability	5 pcs
<b>Other Technical Specification</b>	
Display	LED(SOC, Alarm)
Communication interfaces	CAN2.0, LoRa
Dimension (W x D x H)	450 × 210 × 244mm
Weight Appr.	18kg
Operating Temperature Range	-10°C~50°C
Max. operating altitude	3,000m
Relative Humidity	15%-85% (No Condensing)
Certification	UN38.3, IEC62619, CE
Installation Style	Floor-Mounted
Warranty	10 years